

||| Manulife



Manulife
Community Club

Your Club Guide



What is Manulife
Community Club?



Service
Access Table



Club Service
Menu 01



Club Service
Menu 02



Appendix I



Appendix II



Appendix III



“Pyone Pyaw Thone”
Program



About MCC
Privilege Card



Scan for
“ကိုယ့်ရပ်ဝန်း”



Scan For
“Pyone Pyaw Thone”
Program Details



Scan For
FAQ

What is Manulife Community Club?

Manulife Community Club is designed to offer priority access, personalized services, and exclusive care benefits, enriching the experience of Manulife policyholders, TOT, COT and MDRT members.

As valued members, they will enjoy premium healthcare access, wellness programs, and special promotions, all seamlessly integrated into one comprehensive program.



Service *Access* Table

	Member Segmentation	Health Propositions				Wellness		Pyone Pyaw Thone Program		Engagement Networking Event	Benefit Accessibility	
		Domestic	International	Health Talk	Vaccination	Wellness Challenge	Yoga	Partners	Retails		Privilege Card	QR
Customer	Royal Member	✓	✓	✓		✓	✓	✓	✓	✓	✓	✓
	Premier Member	✓	✓	✓		✓	✓	✓	✓	✓	✓	✓
	All Customers			✓		✓		✓	✓	✓		✓
Agent	TOT	✓		✓		✓	✓	✓	✓	✓		✓
	COT	✓		✓		✓	✓	✓	✓	✓		✓
	MDRT	✓		✓		✓		✓	✓	✓		✓



Club *Service* : Menu 01

Health Propositions

✓ Domestic



Enjoy **Private Lounge Access**, personalized services, and priority assistance with minimal waiting.

As a valued member, access premium healthcare, including OPD consultations and medical check-ups at Grand Hantha Hospital – Hantha Prestige Care for a seamless experience.

✓ International



As part of the Extra Care Benefit, enjoy an additional **20%** off on medical check-up packages.

✓ Health Talk



In collaboration with partnered hospitals, quarterly seminars hosted by Vejthani specialists.

A free consultation session is available on the seminar day.

Wellness

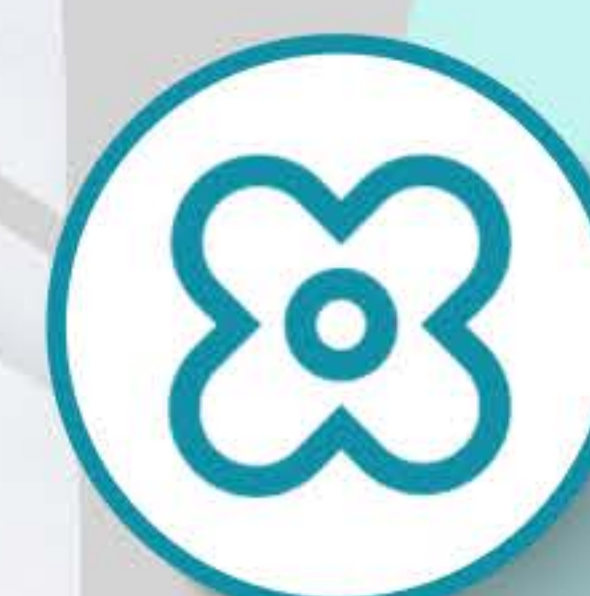
✓ Manulife Wellness Challenge



This program helps individuals to focus on their health by promoting physical activity, mental wellness, and healthier habits.

Participated and getting rewards as they progress through the challenge, making it a fun and motivating way to prioritize well-being.

✓ Yoga sessions



These sessions are designed to enhance both physical and mental well-being, providing a refreshing way to stay active and centered.

As part of journey to better health, offers organized yoga classes where can participate and enjoy the benefits of yoga.



Club *Service* : Menu 02

Pyone Pyaw Thone

Pyone Pyaw Thone Program is designed exclusively for you, offering special rewards and privileges from our partners to enhance your daily social life and overall well-being.

Health Care Partners



Exclusive rewards and privileges from our **Health Care Partners** to support your health and well-being.

Wellness Partners



Special rewards and privileges from our **Wellness Partners**, designed to enhance your physical and mental well-being.

Lifestyle & Travel Partners



Exclusive rewards and privileges from our **Lifestyle & Travel Partners**, designed to enrich your everyday experiences and adventures

Retails with Pyone Pyaw Thone

City Rewards



An opportunity to earn up to **10,000 Reward Points** as a gift by spending at least 50,000 Kyats at City Mart outlets and stores that accept City Rewards.

This offer can be used every Friday, Saturday, and Sunday of the first week of each month.

Engagement

Networking Event



This event is organized alongside our **Wellness Program** and health propositions, offering a unique opportunity to connect with others while promoting better health and well-being.



Exclusive *Benefits* for Manulife Clients

Hantha Prestige Care (Premium VIP Healthcare)

Priority Access to Hantha Prestige Care services, ensuring top-tier healthcare for Manulife clients.

Enhanced Customer Experience through seamless and efficient medical care.

With this program, patients benefit from:

- Private Lounge Access : A comfortable and exclusive waiting area for added convenience.
- One-to-One Care Customization : Personalized healthcare tailored to individual patient needs.
- Minimum Waiting Time : Expedited consultations and diagnostics for a smooth experience.
- Available Services : OPD consultations and comprehensive medical checkup services.



Royal Members




Premier Members



TOT, COT and
MDRT Members

Booking Hotline - 01 2317600

 To use these services, please make a booking at least one day in advance.



International Extra Care *Service*

20 % additional discount for Health Check Up package
(age 30 and above)

Royal and Premier members are eligible to receive benefits
twice per year



Booking Hotline - +66 819845111



Exclusive *Benefits* for Manulife Clients

Mandalar Hospital

Exclusive Discounts at Mandalar Hospital for Manulife Clients. Special savings on check-ups, inpatient rooms, and outpatient services.

With this program, eligible members enjoy:

- ✓ Royal Members: **25%** off check-up packages, **10%** off inpatient rooms, and **20%** off outpatient services.
- ✓ Premier Members: **15%** off check-up packages, **10%** off inpatient rooms, and **20%** off outpatient services.
- ✓ Sale Champions (TOT, COT, MDRT): **15%** off check-up packages, **10%** off inpatient rooms, and **20%** off outpatient services.
- ✓ Employees: **15%** off check-up packages, **10%** off inpatient rooms, and **20%** off outpatient services.



Special Offer: **25%** discount on male and female check-up packages.



33rd street, between 68th & 69th street, Mandalay, Myanmar.



+959 423 343 640 , +959 796 188 100



info@mandalarhospital.com

Contact Info



Exclusive *Benefits* for Manulife Clients

Myat Taw Win Hospital (Taunggyi)




Exclusive Discounts at Myat Taw Win Hospital (Taunggyi) for Manulife Clients.
Special savings on check-ups, inpatient rooms, and outpatient services.



Special Offer: **25%** discount
on male and female check-up packages.

 22, Kyant Khaing Yae St,
Pyi Tawthar Qtr, Taunggyi, Myanmar.

 09 969 897 770, 09 969 897 771

 info@myattawwin.hospital

Contact Info

With this program, eligible members enjoy:

- ✓ Royal Members: **25%** off check-up packages, **10%** off inpatient rooms, and **20%** off outpatient services.
- ✓ Premier Members: **15%** off check-up packages, **10%** off inpatient rooms, and **20%** off outpatient services.
- ✓ Sale Champions (TOT, COT, MDRT): **10%** off check-up packages, **10%** off inpatient rooms, and **20%** off outpatient services.
- ✓ Employees: **10%** off check-up packages, **10%** off inpatient rooms, and **20%** off outpatient services.



Health Check Up *Program* for Manulife Community Club

Health Check Up Program	Young Executive		Executive		President		President Plus	
	Gentleman	Lady	Gentleman	Lady	Gentleman	Lady	Gentleman	Lady
Age	30+		35+		40+		40+	
Estimated Duration Time	4 hrs		5 hrs		6 hrs		7 hrs	
Vital Sign, BMI	✓	✓	✓	✓	✓	✓	✓	✓
Physical Examination	✓	✓	✓	✓	✓	✓	✓	✓
Eye Examination								
Basic Eye Examination			✓	✓	✓	✓	✓	✓
Fundus Camera					✓	✓	✓	✓
Labortory Examination								
Blood Group, Rh	✓	✓	✓	✓	✓	✓	✓	✓
Complete Blood Count (CBC)	✓	✓	✓	✓	✓	✓	✓	✓
Fasting Blood Sugar (FBS)	✓	✓	✓	✓	✓	✓	✓	✓
Glycated Hemoglobin (HbA1c)	✓	✓	✓	✓	✓	✓	✓	✓
Urine Examination (UA)	✓	✓	✓	✓	✓	✓	✓	✓
Uric Acid	✓	✓	✓	✓	✓	✓	✓	✓
Kidney Function Test								
Blood Urea Nitrogen (BUN)	✓	✓	✓	✓	✓	✓	✓	✓
Creatinine plus eGFR	✓	✓	✓	✓	✓	✓	✓	✓



Health Check Up Program	Young Executive		Executive		President		President Plus	
	Gentleman	Lady	Gentleman	Lady	Gentleman	Lady	Gentleman	Lady
Age	30+		35+		40+		40+	
Estimated Duration Time	4 hrs		5 hrs		6 hrs		7 hrs	
Lipid Profile								
Cholesterol	✓	✓	✓	✓	✓	✓	✓	✓
Triglyceride	✓	✓	✓	✓	✓	✓	✓	✓
HDL Cholesterol	✓	✓	✓	✓	✓	✓	✓	✓
LDL Chlesterol	✓	✓	✓	✓	✓	✓	✓	✓
HS-Troponin 1								
HS-Troponin-1	✓	✓	✓	✓	✓	✓	✓	✓
Liver Function & Stomach Test								
Albumin, Total protein			✓	✓	✓	✓	✓	✓
SGPT, SGOT	✓	✓	✓	✓	✓	✓	✓	✓
GGT, ALP, Direct Billirubin, Total Billirubin	✓	✓	✓	✓	✓	✓	✓	✓
Helicobacter Pylori Antibody (CIM-IgG)			✓	✓	✓	✓	✓	✓
Hepatitis Test								
Hepatitis B surface Antigen (HBsAg)			✓	✓	✓	✓	✓	✓
Hepatitis B surface Antibody (HBsAb)			✓	✓	✓	✓	✓	✓
Hepatitis C virus (AntiHCV)			✓	✓	✓	✓	✓	✓
Tumor Maker								
Alpha-fetoprotein (AFP)	✓	✓	✓	✓	✓	✓	✓	✓
Carcinoembryonic antigen (CEA)	✓	✓	✓	✓	✓	✓	✓	✓
Prostate specific antigen (PSA)	✓		✓		✓		✓	
Pancreatic cancer (CA 19-9)					✓	✓	✓	✓
Ovarian cancer (CA 125)								✓



Health Check Up Program	Young Executive		Executive		President		President Plus	
	Gentleman	Lady	Gentleman	Lady	Gentleman	Lady	Gentleman	Lady
Age	30+		35+		40+		40+	
Estimated Duration Time	4 hrs		5 hrs		6 hrs		7 hrs	
Hormones, Vitamin and Electrolytes								
Thyroid Stimulating Hormone (TSH)	✓	✓	✓	✓	✓	✓	✓	✓
Free Thyroxine (Free T4)	✓	✓	✓	✓	✓	✓	✓	✓
Calcium	✓	✓	✓	✓	✓	✓	✓	✓
Vitamin D total			✓	✓	✓	✓	✓	✓
Sodium			✓	✓	✓	✓	✓	✓
Potassium			✓	✓	✓	✓	✓	✓
Testosterone					✓		✓	
Estradiol						✓		✓
Follicle Stimulating Hormone (FSH)						✓		✓
Radiological and Others Special Tests								
Chest X-ray (CXR)	✓	✓	✓	✓	✓	✓	✓	✓
Ultrasound Whole abdomen	✓	✓	✓	✓	✓	✓	✓	✓
Electrocardiogram (EXG)	✓	✓	✓	✓	✓	✓	✓	✓
Ankle-Brachial Index (ABI)			✓	✓	✓	✓	✓	✓
Exercise Stress Test or Echocardiogram (EST or ECHO)	✓	✓	✓	✓	✓	✓	✓	✓
Bone Mineral Density Hip, Spine (BMD Hip, Spine)			✓	✓	✓	✓	✓	✓
Fibroscan					✓	✓	✓	✓
Digital Mammogram with USG Breast		✓		✓		✓		✓
Liquid based pap test 7 days		✓		✓		✓		✓
CT calcium score							✓	✓
Digital Mammogram with USG Breast							✓	✓



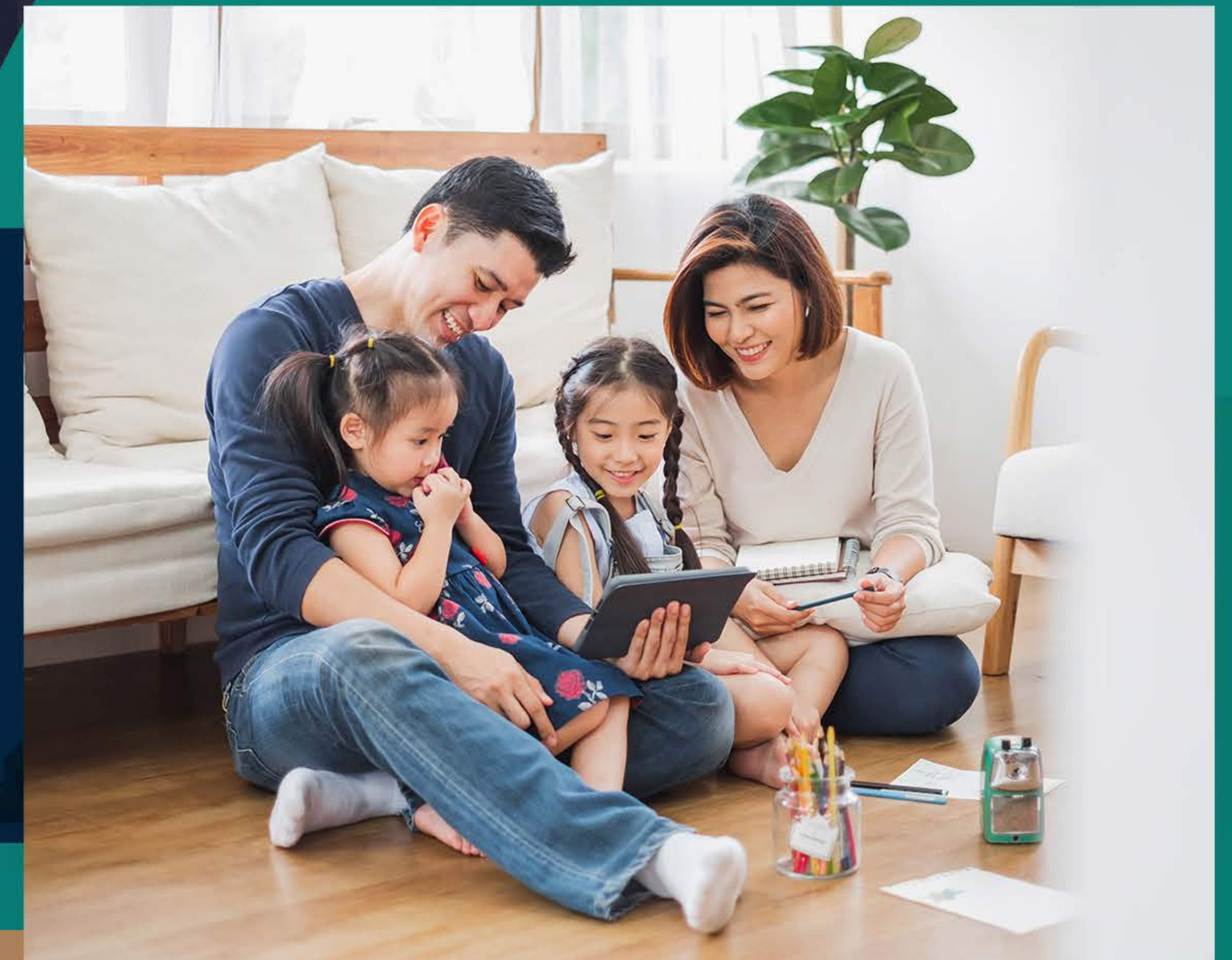
Health *Talk*

Continuous Health Education for Royal/ Premier members and free consultation after seminar with specialist consultant.



“Pyone Pyaw Thone” *Program*

Our Pyone Pyaw Thone Program is designed exclusively for you, offering special rewards and privileges from our partners across Health Care, Fitness, Lifestyle, and Travel-enhancing your everyday experiences and overall well-being.



To unlock these exclusive benefits, simply scan the QR code at our partner brand counters and enter the phone number and date of birth used for your first policy purchase.



“Pyone Pyaw Thone” *Program* Partnership

Health Care



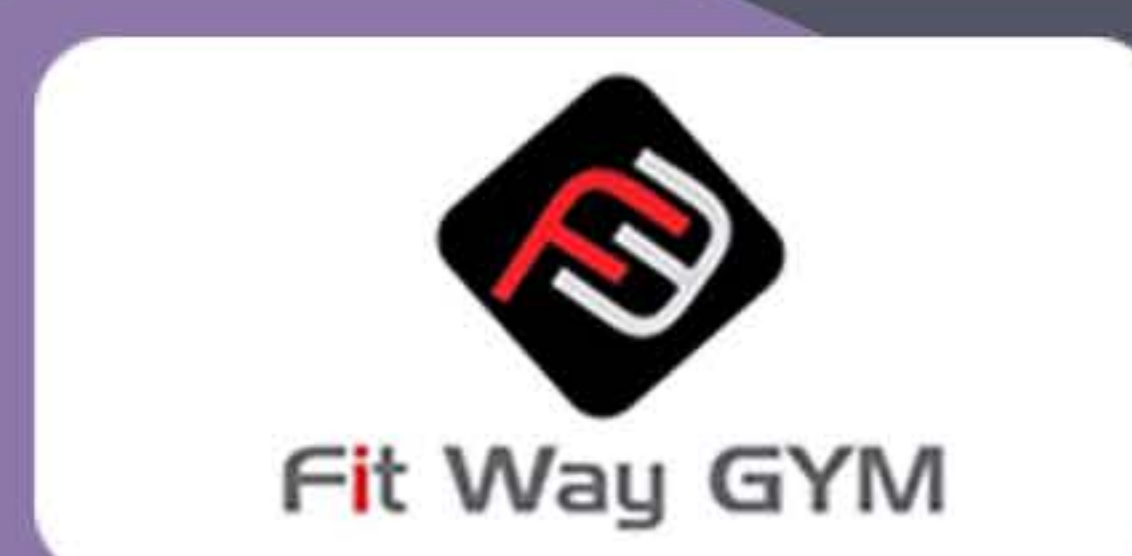
Travel/ Leisure



Lifestyle



Fitness



Retails



About MCC Privilege Card

Manulife provides **MCC Privilege Card** to offer seamless access to exclusive benefits, ensuring customers feel truly valued. Designed exclusively for Manulife **Royal** and **Premier** members, this card grants special recognition and unlocks a range of unique rewards and privileges, enhancing the customer experience.



MCC
Privilege Card





Scan for
“ကိုယ့်ရပ်ဝန်း”





Scan for
“Pyone Pyaw Thone”
Program Details





Scan for
FAQ





Manulife
Community Club

